



WALLTITE[®]

The airtight insulation solution

Refurbished masonry wall insulation (independent metal frame)

Data sheet 3.3



 **BASF**

We create chemistry

Refurbished masonry wall insulation (independent metal frame) Data sheet 3.3

Description

WALLTITE can be applied directly onto a solid masonry wall, around the frame/channel brackets, without the need for traditional adhesion promoters or mechanical fixings.

This method greatly reduces repeating thermal bridges through the insulation caused by either timber studs or metal frames.

The resulting continuous insulation and air barrier system will provide a permanent solution for any 'hard to treat' solid wall situation.

Certification

BBA Certificate No. 11/4816.

WALLTITE has undergone various performance tests. Certificates are available on request.

Technical data

| | |
|---------------|----------------------------------|
| Specification | Dry lining of solid masonry wall |
| NBS clause | P10 |
| Lambda 90/90 | 0.025 to 0.028W/mK |
| Fire rating | Class 1 to BS 476 Part 7 |
| μ | 61.12 |

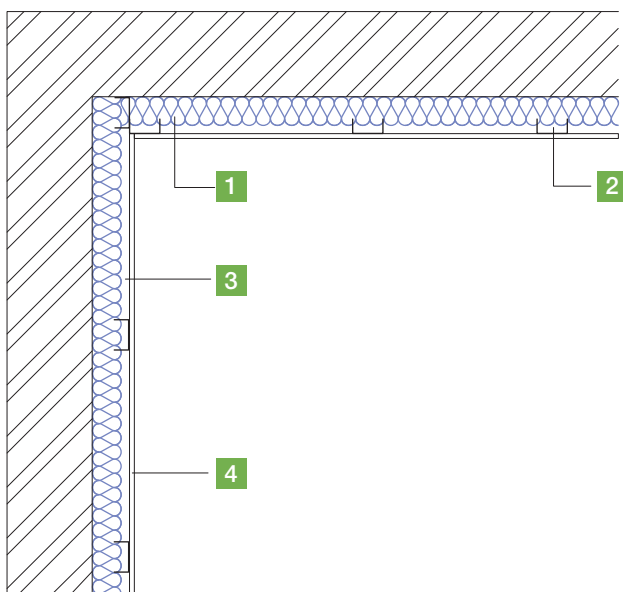
U-values

| Thickness of WALLTITE (mm) | U-value (W/m ² K) |
|----------------------------|------------------------------|
| 120 | 0.20 |
| 85 | 0.26 |
| 65 | 0.34 |



Typical detail:

Existing solid wall



1. WALLTITE CL100 insulation between and behind studwork to achieve target U-value
2. Galvanised metal frame independent of the wall
3. Unventilated air space
4. 12.5mm vapourcheck wallboard and skim finish

