



BASF
We create chemistry



WALLTITE[®]
The airtight insulation solution

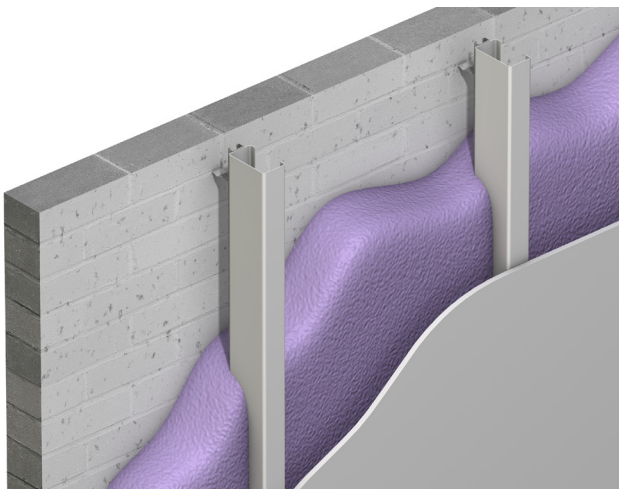
Seagreen Gate Development, Greystones Co. Wicklow

Best practice case study



Seagreen Gate development Greystones

Best practice case study



Project data

Project: Low density, low rise development of 180 high specification homes in Greystones

Foam Master: Lyons Insulation

Contractor: Wood Group Homes

Energy consultants: NuTech Renewables

Scope of project: Spray 160mm of WALLTITE® CL100 direct to external hollow block walls

Project area: 180 new homes

Products used: WALLTITE® CL100 Class 1 fire rated closed cell polyurethane spray foam

Project background

Seagreen is nestled in the North Shore of Greystones in County Wicklow and is a low density, low rise development of 180 homes construction to the highest specification.

Challenges

Wood Group Homes are renowned for building quality homes for over 40 years. This family run company spread over three generations pride themselves on their attention to detail throughout every building they undertake. Seagreen is no different with the developer looking to challenge the normal way of constructing their houses in search of the most energy efficient, well insulated building they could achieve.

In conjunction with energy consultant NuTech Renewables, it was decided that the standard two leaf cavity wall construction was not going to achieve the demanding specification for airtightness and thermal efficiency required for this new development and a new product or construction method was required.

Solution

The wood group turned to BASF WALLTITE® CL100 as the insulation of choice for achieving their high standard

Insulation specification. WALLTITE® CL100 is sprayed directly onto a single 215mm hollow block wall. Metal I studs are fixed internally 50mm from the hollow block to avoid thermal bridging and 160mm of WALLTITE® is installed to create a seamless, airtight, thermally efficient, Class 1 fire rated insulation system that cannot be achieved through conventional methods. A service cavity is provided on the face of the WALLTITE® and the wall is finished with plasterboard and skim.

